

Name: \_\_\_\_\_

Date: \_\_\_\_\_

**Spelling Quiz for Category: prepositions**

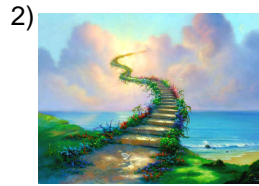
Order all the letters and fill in the blank with the corrected word.



mourning

**du toel**

\_\_\_\_\_



towards, about,  
around

**ahcia**

\_\_\_\_\_



except

**cepexot**

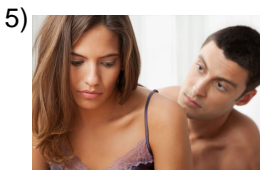
\_\_\_\_\_



for, to

**praa**

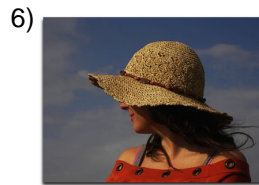
\_\_\_\_\_



during

**tdueran**

\_\_\_\_\_



with

**onc**

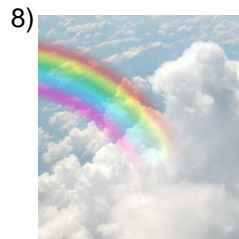
\_\_\_\_\_



to spoil, to wreck

**arrehare cp de**

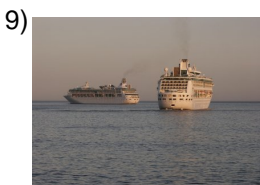
\_\_\_\_\_



before

**ntae**

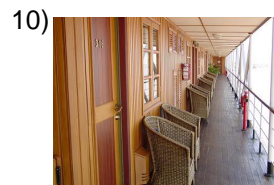
\_\_\_\_\_



next to, at the same  
time

**a lpr aa**

\_\_\_\_\_



on deck

**sreuerabcbi to**

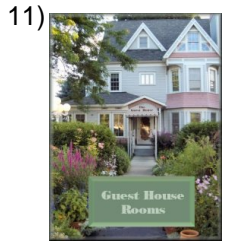
\_\_\_\_\_

Name: \_\_\_\_\_

Date: \_\_\_\_\_

**(continued) Spelling Quiz for Category: prepositions**

Order all the letters and fill in the blank with the corrected word.



guest house

usescaaeé ed sdhp

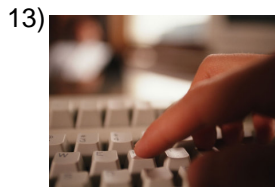
---



regardless of  
expense

inmiraas g s arsto

---



in order

erngel a

---



until

hstaa

---



except

vaslo

---



because of, to, for,  
by, through

opr

---



on horse

aacb oall

---



safe and sound

oedsdainn v

---



without

nsi

---



behind, after

rsta

---

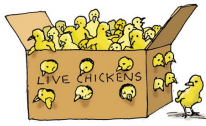
Name: \_\_\_\_\_

Date: \_\_\_\_\_

**(continued) Spelling Quiz for Category: prepositions**

Order all the letters and fill in the blank with the corrected word.

21)

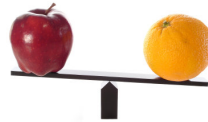


in

ne

\_\_\_\_\_

22)



of

ed

\_\_\_\_\_

23)



against

cnaotr

\_\_\_\_\_

24)



between, divided by

enetr

\_\_\_\_\_

25)



on top of, above,  
about

obres

\_\_\_\_\_

26)



before

an deset

\_\_\_\_\_

27)

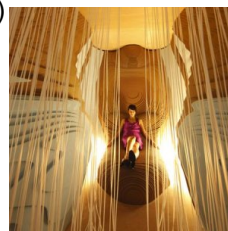


underdeck

ajc bbertaoui

\_\_\_\_\_

28)

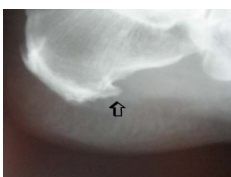


by means of

nmedteia

\_\_\_\_\_

29)



to reduce to a  
minimum

rn nouiumm redca íi

\_\_\_\_\_

30)



since, from

dseed

\_\_\_\_\_

Name: \_\_\_\_\_

Date: \_\_\_\_\_

### **Answer Key for Worksheet b5fe0**

#### *Spelling Quiz starting on page 1*

1 = de luto , 2 = hacia , 3 = excepto , 4 = para , 5 = durante , 6 = con , 7 = echar a perder , 8 = ante , 9 = a la par , 10 = sobre cubierta , 11 = casa de huéspedes , 12 = sin mirar a gastos , 13 = en regla , 14 = hasta , 15 = salvo , 16 = por , 17 = a caballo , 18 = sin novedad , 19 = sin , 20 = tras , 21 = en , 22 = de , 23 = contra , 24 = entre , 25 = sobre , 26 = antes de , 27 = bajo cubierta , 28 = mediante , 29 = reducir a un mínimo , 30 = desde